

2021

ANNUAL REPORT

HEMOWATERS RECONNECT



RECONNECT WITH WILD

IN 2021, OUR NATIVE FISH SOCIETY SUPPORTED:

400 MILES OF ADDITIONAL SALMON, STEELHEAD, AND LAMPREY HABITATS THAT WILL SOON BE AVAILABLE IN THE KLAMATH RIVER AS WE CELEBRATE FEDERAL APPROVAL INITIATING THE DAM REMOVAL PROCESS.

89 PEOPLE ACROSS THE PACIFIC NORTHWEST OF THEIR HOMEWATERS AS RIVER STEWARDS WHO LEVERAGED THEIR TALENTS AND SKILLS TO REVIVE ABUNDANT WILD FISH THROUGH 29 ACTIVE CONSERVATION CAMPAIGNS.

\$22 MILLION OF PUBLIC FUNDS INVESTED IN A NEW HABITAT DIVISION WITHIN THE OREGON DEPARTMENT OF FISH AND WILDLIFE TO PROTECT COLD AND CLEAN RIVER WATER VITAL FOR NATIVE FISH.

9 ORGANIZATIONS, LED BY NATIVE FISH SOCIETY, THAT CAME TOGETHER TO FORM THE NORTH UMPQUA COALITION AND CHAMPION AN ALL WILD STEELHEAD RIVER THROUGH A 10-YEAR PAUSE ON THE HATCHERY SUMMER STEELHEAD PROGRAM.

710 GENETIC SAMPLES COLLECTED BY NATIVE FISH FELLOW SAMANTHA KANNRY FROM JUVENILE STEELHEAD ACROSS 43 LOCATIONS IN NORTHERN CALIFORNIA TO SAFEGUARD THESE UNIQUE FISH POPULATIONS AND THEIR HABITATS.

9,000 WILD COHO SALMON RETURNED TO THE CLACKAMAS RIVER, THE MOST SINCE 1957, THANKS TO VOLITIONAL FISH PASSAGE AND A WILD FISH SANCTUARY NFS HELPED SECURE.

4 WILLAMETTE TRIBUTARIES BENEFITED FROM VOLITIONAL FISH PASSAGE AND COOLER WATER RESULTING FROM OUR LEGAL VICTORY ADDRESSING THE ARMY CORPS HARMFUL DAM OPERATIONS.

175 HOURS INVESTED BY RIVER STEWARDS AND VOLUNTEERS TRAINING COMMUNITY MEMBERS TO CONDUCT SPAWNING SURVEYS FOR COHO SALMON AND WILD STEELHEAD ON THE FREE-FLOWING WHITE SALMON RIVER.



HOMEWATERS: RECONNECT

MESSAGE FROM EXECUTIVE DIRECTOR MARK SHERWOOD

The year 2021 was a tough one for native fish. Historic drought conditions and the dreaded heat dome gripped much of the Northwest warming many streams and rivers to temperatures lethal for native fish. Add these tough freshwater conditions to years of a warm and unproductive ocean and you have a recipe for trouble. Summer steelhead returns in the Columbia, North Umpqua, and Skeena set all-time record lows. Even the Olympic Peninsula returned its lowest ever run of wild winter steelhead - resulting in a truncated, mostly closed angling season.

The Native Fish Society community sprung into action to meet these crises with science-based advocacy. Staff joined River Stewards in support of unprecedented actions to give struggling native fish populations a break, everything from fishery closures, emergency cold water spill from dams, restricting the collection of wild fish for hatchery broodstock (to ensure a maximum number of wild fish spawned naturally), and providing fish with sanctuary by limiting angling in small cold water refuges. Where angling continued, we advocated for best practices in catch and release for wild fish: keep fish wet, single barbless hooks, and limit your catch.

All of these measures were aimed at one critical goal: maximizing the number of wild fish that spawned successfully in 2021. Thankfully, this collective action and sacrifice made a real impact. For example, in the Deschutes, Oregon Department of Fish and Wildlife estimated that the steelhead fishery closure reduced angling-related mortality by 50%, giving more fish the critical chance to spawn successfully.

At the same time, we didn't just focus on solving the emergencies of the day. The crises of 2021 reconnected us with the importance of making the lasting changes

necessary to revive wild abundance over the long term. Together, staff, members, volunteers, and partners advanced dam removal efforts on the Eel, Klamath, North Umpqua, and just outside Portland on Kellogg Creek. Cleaner, cooler water and volitional fish passage carried juvenile spring Chinook salmon safely down the Willamette, thanks to a years-long campaign to improve the Army Corps' management of their 13 dams, which impound tributaries of Oregon's largest watershed. We secured significant new monitoring and transparent fisheries management in southwestern Oregon. To buffer against a changing climate, we helped increase public investment in the protection of cold, clean water and native fish habitat by establishing a new Habitat Division within ODFW.

With River Stewards and staff we created new partnerships to improve cold water habitat in cherished homewaters like the lower Deschutes and Molalla rivers. We advocated that the fabled North Umpqua be managed as an all wild steelhead river. The majority of our work focused on the actions that will make a future with abundant wild fish, free-flowing rivers, and thriving local communities possible.

When we get to spend time on the river, we're reconnected with the incredible opportunity to experience first hand the arteries and lifeblood of the Pacific Northwest - its rivers and native fish. And when we see so much that needs care, we're also reconnected with the great responsibility to be good stewards. We cannot thank you, our friends, donors, volunteers, staff, and Board of Directors enough for your steadfast commitment to making this vision of abundance a reality. It's the groundswell of your support that has and will create the transformative power to make long lasting change for wild fish and the habitats that sustain us all. Thank you.

Wild is the Future,



WILD FISH FOR ALL: INSPIRES DEDICATED VOLUNTEERS

FROM THE AIR, Bakeoven Creek appears as a thin green ribbon winding out of arid golden hills to join the eastern side of the lower Deschutes River near Maupin, OR. Critical habitat for native fish, Bakeoven Creek is one of just a handful of tributaries that supports the river's native summer steelhead and Redband Trout. Unfortunately, Himalayan Blackberry, Starthistle and other invasive species were growing prolifically along its banks, choking out native plant species that provide shade to cool water and supply the organic material to sustain healthy insect populations. Considering the fragile state of the Deschutes River's native fish and the need to restore healthy creekside vegetation our very own Tracy Buckner, Operations and Women for Wild Fish staffer, landed on the idea of using goats to chew through the exotic plant invasion.

In partnership with the Deschutes River Alliance, the City of Maupin, Native Fish Society's Women for Wild Fish Initiative, and with financial support from the kind donation of a week-long trip to the Babine River, our local partner Randy Klettke got in touch with the Goat King - Ray Holes. Ray raises Spanish-Boer goats for use as targeted grazing specialists.

Over the course of 30 days this past summer, Ray's 600 goats, along with eight herding dogs, and a pair of Peruvian goat herders, removed a staggering 72,000lbs of invasive plants from Bakeoven Creek.

Following up the goats, teams of volunteers spent 160 hours removing root wads and preparing the creekside area to be replanted with native plants. Thanks to dedicated volunteers and a herd of hungry goats, the health of Bakeoven Creek is being restored so it can once again be an oasis in the desert for native fish!



*NFS's Tracy Buckner and DRA's Sarah Cloud celebrating the goat's arrival at Bakeoven Creek!
Photo: Tracy Buckner / Native Fish Society*

Jodi Wilmoth, Native Fish Society's Little Deschutes River Steward, put together a project collecting environmental DNA, or eDNA, samples in the Crooked and Little Deschutes Rivers to determine the presence or absence of native Bull Trout and Redband Trout. Over the summer, 24 volunteers collected 56 eDNA samples in 18 streams. The volunteer-led project was part of a region-wide effort with the US Fish and Wildlife Service and the US Forest Service Rocky Mountain Research Station to use eDNA to determine the current range of Bull Trout - a protected

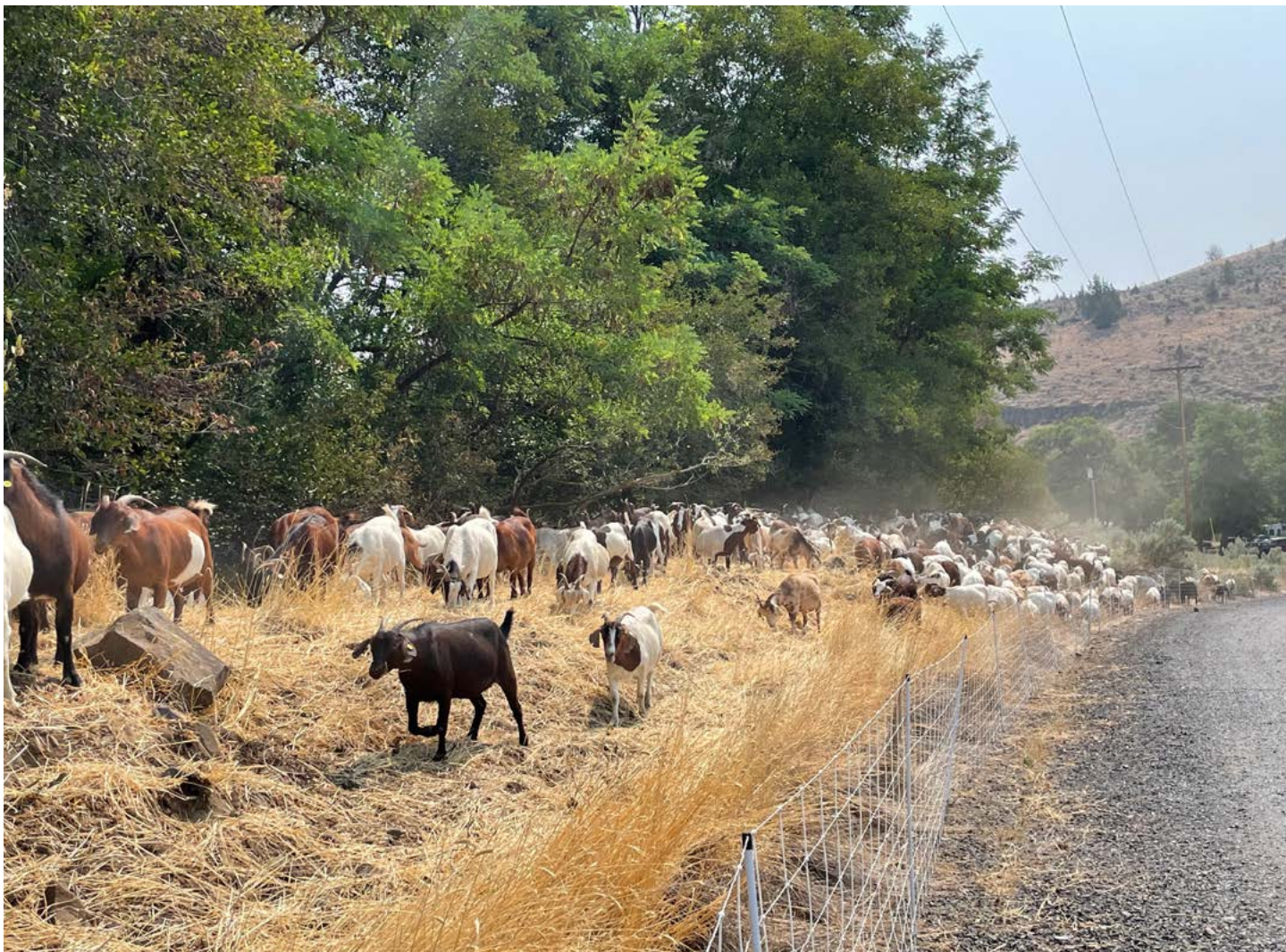
species under the Endangered Species Act since 1999. In streams where Bull Trout are present, the fish population and stream gains higher levels of protection. While the 2021 sampling effort did not detect any new streams with Bull Trout, there are many more streams left to survey. The Klamath watershed is particularly promising for finding and protecting these remarkable native trout.

How do wild fish respond to dam removal? That's the question being answered by volunteers on Washington's White Salmon River, where in 2014 Condit Dam was removed, reconnecting wild salmon and steelhead with 33 miles of habitat. In 2021, J. Michelle Swope, Washington Coordinator, worked with dozens of amazing volunteers, including Chelsey Betterely, Ben Leyva, and, Dan Peirce and longtime member Felton Jenkins, as well as biologists from Friends of the White Salmon and the Washington

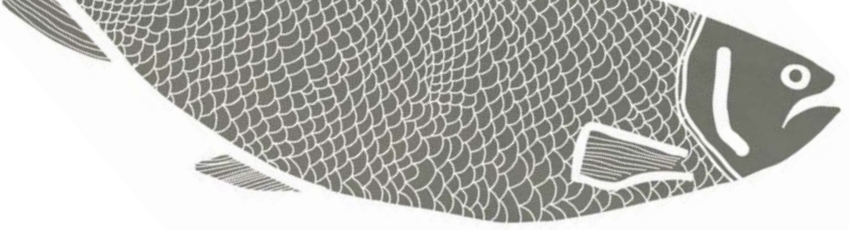
Department of Fish and Wildlife to conduct spawning ground surveys for salmon and steelhead. This collective project has built great partnerships that will furnish data to tell the story of how wild fish are reclaiming their homestream.

These volunteers also spent 175 hours in the watershed, hiking, observing, and collecting data - all critical for developing their personal knowledge of the river, which is an essential component of effective grassroots advocacy.

With these partnerships, we are beginning to set a new course for the Willamette Basin and its wild fish. We know that there is much yet to be done, but we're making major strides by working together.



600 goats consumed 72,000lbs of invasive plants in just 30 days! Photo: Tracy Buckner / Native Fish Society



WILD FISH FOR ALL: SUPPORTS DIVERSE VOICES

AFTER THE FALL FISHING SEASON WRAPS UP ON THE DESCHUTES RIVER, Matt Mendes stows his fishing gear and drift boat and turns his attention to restoring his homewaters. As a fishing guide, a Native Fish Society River Steward for the Warm Springs River, and an enrolled member of the Confederated Tribes of Warm Springs, Matt knows that he has a unique intersection of responsibilities for the health of the river and its native fish.

During the winter months you can find Matt hosting volunteer work parties to clean up trash on the reservation, putting signage up to inform anglers about critical spawning areas for native fish, fixing fencing to protect fragile streamside habitats, and planting native plants to restore riparian areas.

Thanks to support from our members and generous grants from the M&T Bank Foundation, AFFTA, and PGE we've been able to support Matt's stewardship work for the past two years! Come spring, Matt will be back guiding and sharing his love for the river with his clients, but until then he's giving back to the river, its fish and his community.

Pacific Lamprey are some of the oldest native fish in the Pacific Northwest, their fossil record dating back 400 million years - 150 million years before dinosaurs first walked the Earth. These long and lithe native fish are born in rivers, mature in the ocean, and return to their homewaters to spawn - a life not so different from Pacific Salmon. To help the Native Fish Society community bridge the gaps between cutting edge science and traditional ecological knowledge, Keith Parker, Senior Fisheries Biologist and enrolled member with the Yurok Tribe in Northern California, presented his research on these



Fishing guide, Confederated Tribes of Warm Springs Member, and NFS River Steward Matt Mendes. Photo: Arian Stevens



Oregon's Wild and Scenic Deschutes River snakes through its lower canyon. Photo: Bob Wick, BLM

fascinating native fish in his homewaters, the Klamath River. Keith's genetic research on Pacific Lamprey in the Klamath helped establish the river as home to the highest diversity of lamprey species of any single watershed in the world. Historically, even with the Klamath's massive salmon and steelhead runs, Pacific Lamprey were the dominant biomass fish species. Culturally, Pacific Lamprey are tribal trust fish species, protected under tribal treaty and they continue to provide direct subsistence when other high lipid food, like salmon, are unavailable. Keith's research also suggests that Pacific Lamprey will greatly benefit from dam removal in the basin, as their diverse



Matt Mendes leads volunteers replanting willows on the lower Deschutes River. Photo: Arian Stevens

populations will help them swim, slither, and climb their way into all corners of a future, free-flowing Klamath River basin.

Thanks to the advocacy of Tribal Nations in the Klamath basin and a strong cohort of conservation and fishing organizations, two substantial steps were taken in 2021 to advance the removal of four dams in the Klamath River. First, on June 17th the Federal Energy Regulatory Commission (FERC) granted the ownership transfer of the four lower Klamath River Dams (JC Boyle, Copco 1, Copco 2 and Iron Gate) to the Klamath River Renewal Corporation (KRRC) and the states of Oregon and California. This transfer of ownership from Pacific Corp to KRRC and the states was a major milestone to ensure that dam removal stays on track for 2023/24. Later in 2021, the final administrative hurdle began, as FERC oversaw the environmental review process for the license surrender application, which will lead to decommissioning and the removal of the four lower dams. Native Fish Society staff and volunteers are honored to work alongside and support the tribal leaders who have brought this historic restoration opportunity to near completion.

When the dams come down, steelhead, salmon, trout, and Pacific Lamprey will benefit from accessing 400 miles of habitat once blocked by dams!

WILD FISH FOR ALL: TURNS SCIENCE INTO ACTION



A wild summer steelhead soon to be released. Photo: Justin Bailie

FOR MORE THAN A DECADE THE ARMY CORPS DEFIED SCIENCE AND THE LAW, refusing to change the operation of the 13 federal dams in Oregon's Willamette River Basin to aid threatened native fish, that is until September 2021.

District Court Judge Marco Hernandez made it clear in his ruling on a lawsuit brought by Native Fish Society and our partners Northwest Environmental Defense Center, Wild Earth Guardians, and Advocates for the West, that the court would not tolerate "further delay or obfuscation."

Thanks to countless biologists, policy and legal experts, dedicated River Steward volunteers, and Jennifer Fairbrother, NFS's Conservation Director, we're celebrating major changes at eight Willamette dams to improve water quality and provide volitional fish passage for juvenile Chinook Salmon and winter steelhead. These long overdue changes are vital to stabilize declining wild fish populations and put hundreds of river miles, previously cut off, back into viable habitats for our sea-going fish.

Southwestern Oregon's remote coastline contains the highest concentration of federally designated Wild and Scenic rivers in the lower 48 United States. These rugged, free-flowing rivers tumble out of high coastal mountains and the Kalmiopsis wilderness – a unique



landscape home to iconic populations of native fish including both summer and winter steelhead. The wild winter steelhead are subject to an increasingly pressured and rare harvest fishery. Particularly concerning, a lack of funding for basic monitoring of these populations left fisheries managers without the basic information (how many wild steelhead are being harvested and how many fish are spawning?) needed to guide a sustainable fishery. Local River Stewards, staff members, and fishing guides joined together to advocate for good data collection and conservative fisheries management to ensure overfishing does not harm the long term health of these wild fish.

In 2021, after years of work with the Oregon Department of Fish and Wildlife staff and stakeholders, including

Kirk Blaine, NFS Southern Oregon Coordinator, a new management plan, the Rogue South Coast Multi-Species Conservation and Management Plan, was adopted by the Oregon Fish and Wildlife Commission. This plan initiated boots on the ground annual spawning surveys in every south coast river for wild winter steelhead. The plan will also ensure limits on harvest are set and not exceeded by requiring every angler to purchase a special authorization to fish for winter steelhead in southwestern Oregon and purchase an additional tag specifically to harvest wild steelhead. While Native Fish Society and many of our partners advocated for a 5-year pause on wild winter steelhead harvest, while data could be collected - this plan is still a major step forward towards putting science into action and allowing data to guide a durable wild fish fishery.

Climate science indicates the Pacific Northwest will warm significantly over the next two decades, snowpack will decrease, while rain could potentially increase. This shift in climate means that cold water sources and sufficient flows in rivers (especially during late summer and fall) will be critical for sustaining wild, native fish.

To provide a bulwark against this hot water threat, our legislative advocacy team and a handful of River Stewards championed a \$22 million public investment in a new “Habitat Division” within the Oregon Department of Fish and Wildlife.

Thankfully, legislators and members of the Fish and Wildlife Commission shared a common view and made this important investment a reality. Now Oregon has a dedicated team working to identify and protect cold water sources and flows as well as protecting sensitive habitats from harmful development. Increasing the public funds used to bolster watershed health is exactly the kind of focus we want to see at our state fish and wildlife agencies – one that puts science into action for our homewaters, native fish, and communities.



WILD FISH FOR ALL: **BUILDS ON SHARED KNOWLEDGE**



Will this Northern California Rainbow Trout become a steelhead? Photo: Jason Hartwick

IN 2021, WITH THE HELP OF DR. LIZ PERKIN, NFS Northern Oregon Coordinator, we started our “Celebrating Wild Abundance” campaign to collect and share stories about rivers where hatchery programs ended, investments were shifted to improve river health, and wild, native fish flourished. We believe that sharing stories and knowledge is needed to convey what is possible for wild abundance and our communities when we follow the science and invest in wild fish!

The first story we shared is about Coho Salmon in Salmon River, which meets the Pacific Ocean just north of Lincoln City, OR. From 1975 to 2008 hatchery Coho Salmon were released into the river each year. In 2005, biologists studying the decline of wild Coho determined that the Coho hatchery program was contributing to wild declines, despite significant habitat restoration occurring in the river’s estuary. Since the hatchery program ended, researchers found that wild Coho Salmon abundance, productivity, and diversity increased substantially. Allowing wild Coho Salmon to adapt to the river’s restored habitat provided the best result!

Another place we’re building on shared knowledge is coastal Northern California. This region’s rugged landscape is home to some of the most resilient and diverse populations of summer and winter steelhead.

However, much is currently unknown about where these populations live in freshwater, specifically where summer and winter steelhead are distributed throughout their homewaters.

Over the course of 2021, Samantha Kannry, NFS’s Genetics Native Fish Fellow, worked with volunteers and partner organizations to collect 850 tissue samples from juvenile steelhead and/or Rainbow Trout in the North Fork Eel, Mad, and Smith rivers as well as Redwood Creek and Blue Creek - the latter a tributary to the lower Klamath River.

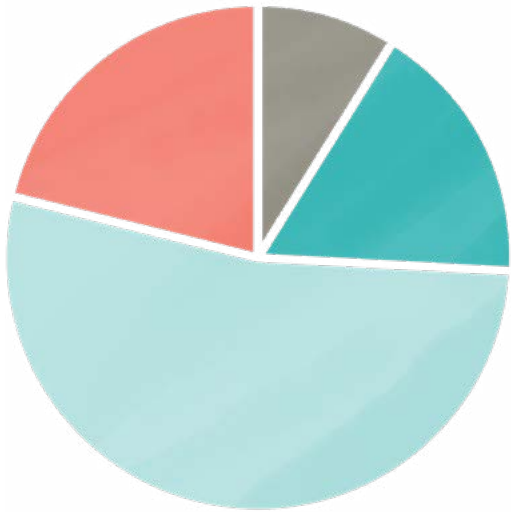
The knowledge gained through this sampling project will help inform conservation efforts to safeguard these native fish and their habitats, especially summer steelhead, which were listed under California’s state Endangered Species Act during 2021. Samantha invites you to join her on her steelhead sampling work this summer in northern California and southern Oregon. To volunteer send Samantha an email at skannry@gmail.com

If you have a “Celebrating Wild Abundance” story to share please get in touch with us!

REVENUE, EXPENSE & IN-KIND

FISCAL YEAR 2021

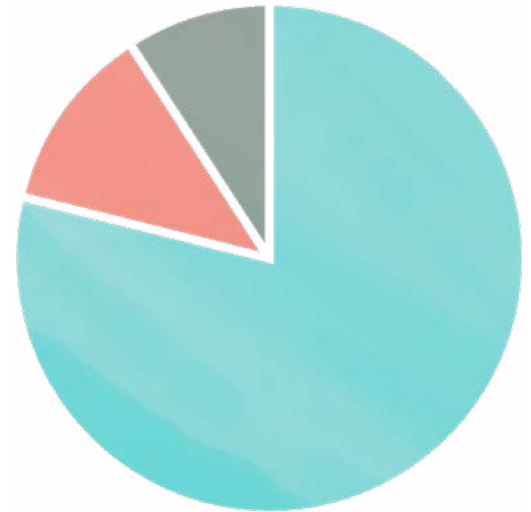
Financial results for fiscal year ending December 31, 2021



INCOME

- Membership \$62k (9%)
- Grants..... \$115k (17%)
- Donations \$364k (53%)
- Events \$144k (21%)

Total Income.....\$685k



EXPENSE

- Program..... \$486k (79%)
- Operations..... \$74k (12%)
- Fundraising..... \$55k (9%)

Total Expense.....\$616k

IN KIND:

18

**Native Fish
Fellows**

89

**River
Stewards**

120+

**Project
Volunteers**

\$100K

**of In-Kind
Donations**

**Please direct financial questions to mark@nativefishsociety.org.*

IN HONOR

Bill (William T.) Smith
by Carolyn Buhl

Brad & Anne Stephens
by Britton Stephens

Brad Hardy
by Tatum Hardy

Brian Oliver
by Megan Oliver

Bud McLean
by Michael McLean

Dusty Revel
by Ted Wang

Eric B Parker
by Bill Parker

George Farr
by Bart Baenziger

Haomiao Liu
by Grace Scott

Jim Rogers
*by Coastmans
Scenic Products*

John & Janet Costello
by Mike Costello

Kevin
by Bonny Chipman

Kirk Blaine
by Ashley Heuer

Kirsten Kinsman
*by Karen Hall, Kimberly Zielke,
Craig & Lisa Kinsman*

Landon Mace
by Sherri Towne

Richard Ahyou
by Richard Ahyou

**Russ Chatham &
Corky Ransom**
by Jim Pruett

Steve Brown
by Travis Brown

Steve McCarthy
by Abigail McCarthy

Tracy Buckner
by Elise Astleford

IN MEMORY

Cal Cadmus
by Robin Cadmus

Carl Lindeken
by Charley Teal

Christopher Anderson
by Lauren Kelley

Eric Young
by Gene Weber

Gerald Green
by Eric Weitz

Gil Nyerges
by Thomas Campbell

Greg Stickrod
by Jim Gent

John Opinsky
by Darryl Fowler

John W. Tingle
by Walter Tigle

Dr. Keith Hansen
by Lisa Hansen

Matt Limo
by Pawley Ryan

Paige Croll
by Andrew Croll

Tom Rudd
*by Elizabeth, Rebecca Rudd,
Barbara Hope*

Wayne Somes
by Judith Somes

William Taylor
by Michael Taylor



Leaping upstream, over waterfalls and rapids a wild summer steelhead returns to its homewaters. Photo: The Columbian



GRANTS & FOUNDATIONS

American Fly Fishing
Trade Association

Brad & Lisa Hillgren Family
Leadership & Education Fund
at the Rancho Santa Fe Foundation

Bill & Malinda Gates Foundation

Clark-Skamanian Flyfishers

Cudd Foundation

Evergreen Family Foundation

Felton Jenkins Conservation &
Education Fund

Healy Foundation

Keta Foundation /
Mountaineers Foundation

Kohnstamm Family Foundation

Kummel Family Fund

M&T Charitable Foundation

Maybelle Clark Macdonald

MiiR

Minneapolis Foundation

Oregon Community Foundation

Patagonia

PGE

Ray Griffin Foundation

Rough J Ranch Foundation

San Diego Fly Fishers

Smith-Welsh Foundation

Soka Piiwa Foundation

Sol Duc Foundation

The Baltoro Trust

The Flyfisher Foundation

The Piacentini Fund

Timothy Boyle

Yvon & Malinda Chouinard

BUSINESS SUPPORTERS

503 Distilling

A to Z Wineworks

Always With Honor

Anadromous Anglers

Anderson Custom Rods

Andras Outfitters

Andros South

Babine Steelhead Lodge

Bartel Contracting

Benchmade

Bend Fly Shop

Black Butte Ranch

Blue Lava Coffee Roasters

C. F. Burkheimer Fly Rods

Caddis Fly Angling Shop

Capistran Ranch

Cascade Spirits

Coava Coffee

Confluence Outfitters

CRKT

Crazy Norwegians

Crook Point Vacations

Crosswater Golf Club

Deneki Outdoors

Deschutes Angler

Dog River Coffee

Double Mountain Brewery

Downriver Fly Fishing

Epic Waters

Far Bank Enterprises

Filson

Fish Head Expeditions

Fish The Swing

Fly Fishing Collaborative

Fort George Brewery

Free Fly Apparel

Frontier Steelhead
Experience

Gold River Lodge

Half Moon Bar Lodge

Heart Rock Art Works

High Desert
River Outfitters

High Mountain Creative

Historic Hood River Hotel

Humble Heron Fly Fishing

Jacobsen Salt Co

Jet Boat Fly Guides

Knife Flight

Lan Su Chinese Garden

Lange Estate
Winery & Vineyard

Loon Outdoors

MiiR

Mike's Ice Cream

Miss Hannah's
Gourmet Popcorn

Mountain House

Mountain Rose Herbs

MUUL

New Belgium Brewing Co

New West Cider

Northline Wealth
Management

Northwest Rafting Co

Oly Women on the Fly

Olympia Provisions

One Green World

Oregon Historical Society

Patagonia

PNW Landing Nets

Portland Nursery

Pure Fishing

Renton River Adventures

Rex Hill Winery

Roamerica

Royal Treatment Fly Fishing

Sage Fly Fishing

Sasquatch Brewing Co.

Savory Spice

Sazerac Company

Silipint

South Coast Tours

Spin The Handle

Spinner's Steak &
Chop House

Steelhead Water
Guide Service

The Fishwife

The Fly Shop

The Steamboat Inn

The Tree House

This Design

Tillak Inc.

Toast Inc.

Tornado Anchors

Vista Balloon Adventures

Widmer Brothers Brewing

Wild Roots Distillery

Wildspring Guest Habitat

Willamette Valley Vineyards

Yeti

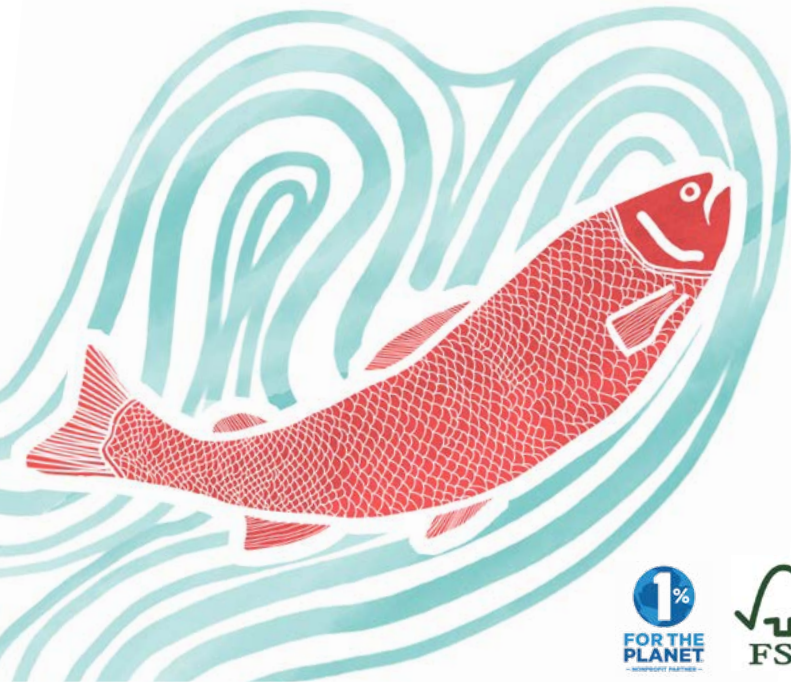
2021 MEMBERS & SUPPORTERS

Aaron Bento	Bo Oswald	Christi Puntenev	David Heddy	Eric Weitz	Isaiah Stanley	Jeremy Harrison
Aaron Maples	Bob & Anne Arns	Christina Collier	David Hess	Eric Wilson	J Michelle Swope	Jeremy Hull
Abigail Craig	Bob & Margaret	Christopher	David Hunsberger	Erik Skoog	Jack & Sue	Jeremy Watkin
Abigail McCarthy	Alston	Baumann	David Jarman	Erik Tobiasson	Hammond	Jerry Swanson
Abraam Sant	Bob Humphrey	Christopher Bryan	David Jones	Ethan Smith	Jacob Christensen	Jesse & Jo Anne
Abraham Sorom	Bob Madson	Crumpler	David Jones	Evan Waddell	Jake Gibbs	Ulloa
Adam Bagerski	Bob Radasch	Christopher Hiatt	David Kaga	Evan Wilcox	Jake Miller	Jesse Buss
Adam Brainerd	Bonny Chipman	Chuck Gehling	David Kalinowski	Evan Winnett	James & Kait	Jesse Lange
Adam Christie	Bonny Houghton	Chuck Kenlan	David Kearford	Eve Baker	Sampsel	Jessica Kelso
Adam Fuller	Brad Hare	Chuck Newport	David Lambroughton	Felton Jenkins	James Banta	Jim & Amy Ray
Adam Silverblatt	Brad Hart	Clark Rector	David Lipscomb	Fletcher Chouinard	James Campbell	Jim & Kathy Foote
Adam Slavinski	Brad Stephens	Clay Holley	David Longanecker	Forrest Jones	James Hill	Jim & Rachael
Adrian Cortes	Bradley Bobbitt	Clay Wertheimer	David Noren	Fran Recht	James Howard	Andras
AJ Kleffner	Brady Hall	Cliff Oakley	David Quinn	Francis Estalilla	James Hubbard	Jim Collis
Al & Pat Neufeldt	Brady Johnstone	Cliff Watts	David Quinney Jr.	Frank Collin	James Marshall	Jim Cox
Alec Underwood	Brandon Stewart	Clifford Canepa	David Spratt	Frank Forencich	James McRoberts	Jim Dickinson
Alex Carnegie	Brendan O'Brien	Clint Brumitt	David Thomas	Frank Kay III	James Mikles	Jim Dowling
Alex Crooks	Brett Howard	Clive Furrows	David Van Dyke	Fraser Heston	James Nudelman	Jim Esch
Alex Morrison	Brett Tallman	Cody Dummer	Dean Barrett	Fred Pendergast	James Ohrt	Jim Genes
Alex Pena	Brian Cowan	Cole Graves	Dean Baxter	Fred Woodcock	James Pagliocco	Jim Gent
Alex Worth	Brian Kircher	Collin McCandless	Dean Hanks	Freddie Sittner	James Petersen	Jim Kelso
Alicia Brady	Brian Koenig	Connor O'Brien	Dean Keller	Gabe Babcock	James Portman	Jim Kilpatrick
Amanda White	Brian Levine	Cornelius Britt	Dean Moberg	Garrett Sullivan	James Prehoda	Jim Meakin
Andrea Warner	Brian Oliver	Courtland Smith	Dean Williams	Garth Foskett	James Ratcliffe	Jim Mullaney
Andrew Chione	Brian Roberts	Courtney Morris	Dennis Dauble	Gary Carlson	James Rowen	Jim Noble
Andrew Croll	Brian Shortt	Craig & Lisa	Dennis Lindquist	Gary D Clark	James Smith	Jim Pruett
Andrew Harris	Brita Nykreim	Kinsman	Dennis Michaud	Gary Lawrence	James Van Alen	Joe Bankofier
Andrew Johnson	Britton Stephens	Craig Coover	Dennis Miller	Gary Rawson	James Wilson	Joe Binder
Andrew Kent	Bruce & Edie	Craig Derby	Derek Page	Gary Sandstrom	Jane Hilt Holloway	Joe Crowther
Andrew Langford	Anderson	Craig Lacy	Dexter Levandoski	Gary Short	Jane Huey	Joe Furgerson
Andrew Pinelli	Bruce Ham	Craig Sweitzer	Dick & Rosemary	Gary Widman	Janet Davis	Joe Radakovich
Andrew Shepherd	Bruce Schwartz	Cregg Large	Law	Gavin Fitzgerald	Jason Baldwin	Joe Rockwell
Andrew Skolnick	Bruce Slightom	Curt Reynolds	Dick & Sue Kellogg	Gayle Wilcox	Jason Goebel	Joe Stockwell
Andrew Stocks	Bruce Thomson	Curtis Cizek	Dillon & Dana Renton	Geoffrey Thompson	Jason Lettmann	Joe Tonahill
Andrew Tsao	Bryan Mullaney	Curtis White	Dominick Villella	Gene Weber	Jason McCandless	Joel & Jennifer
Andy Jones	Bryan Sohl	Dab Dabney	Don & Wendy Lange	Geoff Mueller	Jason Weinstein	La Follette
Andy Montpas	Bryon Salaz	Dale Bundy	Don Barton	Geoffrey Akie	Jason Wells	John & Amy Hazel
Ann Smith	Bucky Buchstaber	Dale Greenley	Don Harsh	George DesBrisay	Jay Beckstead &	John Atkins
Ann Vileisis	C Mark Rockwell	Dale Krenek	Don Lerner	George Happ	Paula Stenberg	John Baumann
Anne Fairbrother	Callie Freeman	Dan Herrig	Don Parkes	George Klein	Jay Coalson	John Blohm
Anthony Comazetto	Calvin Knight	Dan Brosier	Don Takush	George Lazar	Jay Ezzell	John Brewer
Anthony Hoag	Carla Lemon	Dan Ellis	Don Titterington	George Marshall	Jay Lowden	John Davis
Anthony Huber	Carmen Smith	Dan Gates	Don Worley	George Stephan	Jay Sherwood	John Epifanio
Aron Klein	Caroline Brown	Dan Hobin	Donald Montell	Gerard Gendron	JB Ferrarone	John Freeman
Art & Virginia Kayser	Carolyn Buhl	Dan O'Neil	Donald Starkin	Gil Martin	Jean Furgerson	John Gravendyk
Arthur Hasson	Cassie Clark	Dan Rice	Dorothy Toppercer	Gil Parker	Jean Perry	John Gwin
Ashley Heuer	Chad Humphreys	Dan Rockey	Doug Campbell	Glenn Baken	Jean Quinsey	John Hoagland
Ashley Running	Charles & KJ Gehr	Dan Taylor	Doug DeRoy	Glenn McCormick	Jeff & Kathryn	John Howard
Ashley Schreiber	Charles Benbrook	Dane Straub	Doug Eisenberg	Glenn Moriyama	Hickman	John Larison
Austin Feskens	Charles Carmeci	Daniel Bassett	Doug Klein	Gonzalo Flores	Jeff Carson	John Lohuis
Barbara Hoppe	Charles Chambers	Daniel Brown	Doug Morgan	Gordon Larson	Jeff Ehleringer	John MacDiarmid
Barry Walker	Charles Dyke	Daniel Donoghue	Douglas Albright	Gordon Olson	Jeff Ferguson	John Mace
Bart Baenziger	Charles Lauckhardt	Daniel Frost	Douglas DeHart	Grace Scott	Jeff Komar	John Mikenis
Ben Dobrow	Charles Lilley	Daniel John	Douglas Edwards	Graeme Thompson	Jeff Loutit	John Miskulin
Ben Johnson	Charles Obosky	Heffernan	Douglas Rohn	Grant Detrick	Jeff Mangin	John Murphy
Ben Royle	Charles Ray	Daniel Kowalski	Dr. Dwayne & Bette	Grant Werschull	Jeff Schillings	John Patton
Ben Tarbox	Charles Rund	Daniel LeMoine	Rice	Greg Alston	Jeff Spiegel	John Pogue
Benjamin Hedberg	Charley Teal	Daniel Matlock	Drew Kelly	Greg Houska	Jeff Thompson	John Putnam
Benjamin McKee	Chelsea English	Daniel Pierce	Duane Marler	Greg O'Brien	Jeff Wallace	John Rabel
Benjamin Miller	Cheryl Anselone	Dante Ghidinelli	Duncan Gasiewicz	Greg Ruppert	Jeffery Hernandez	John Rose &
Benjamin Popper	Cheryl O'Neill	Darryl Fowler	Duncan Kerst	Gregory Garcia	Jeffery Smith	Carolyn Pedone
Benton Lewis	Chris & Cairn	Dave Evans	Dustin Revel	Gregory Minaker	Jeffrey & Lisa	John Rosenberg
Bernard Yin	O'Donnell	Dave Griffiths	Dwayne Horii	Gus & Kim Bergsma	Hamblin	John Rowe
Beth Ann Orton	Chris & Gina Eckley	Dave Lacey	Dwight Doty	Guy Holtzman	Jeffrey Dooley	John Siegler
Beth Bierman	Chris Armstrong	Dave Smits	Ed Brenner	Hank Lohse	Jeffrey Dose	John Sullivan
Beverly Wilson	Chris Bellows	David & Debbie	Edward & Brenda	Hans Stephenson	Jeffrey Evershed	John Tehan
Bill (Beatie)	Chris Corbin	Renton	Brown	Harold Rockwell	Jeffrey Grass	John West
Abshagen	Chris Daughters	David Andrus	Edward Black	Harold Weight	Jeffrey Kelly	Jon & Jan Kellogg
Bill & Fran Taylor	Chris Deady	David Bagwell	Edward Hiar	Harris MacGregor	Jeffrey Kohnstamm	Jon Bowers
Bill Bittle	Chris Frissell	David Beaudry	Elden & Marjorie	Harry Piper III	Jeffrey Schaper	Jon Counts
Bill Hatcher	Chris Hager	David Bennett	Rosenthal	Hayden Meyers	Jeffrey Wiser	Jon Grinney
Bill Lombard	Chris Heldridge	David Bradford	Elise Astleford	Henry Little	Jeffry Gottfried	Jon Kurtz
Bill Lozier	Chris Janowski	David Buchanan	Elizabeth Noyes	Henry Longmire	Jen Matthews	Jon Newburn
Bill Parker	Chris Johnson	David Cushman	Elizabeth Rudd	Herb Blank	Jennifer Tasto	Jon Reissner
Bill Pearcy	Chris Sheline	David Douglas	Elliott Adler	Hilma Crowfoot	Jeremy & Charlotte	Jonathan Joseph
Bill Seaman	Chris Yarnes	David Hardy	Eric Martinson	Hyun Kounne	Robillard	Jonathan Kuipers
Blaine Tabor	Christ Bouneff	David Hasse	Eric Neufeld	Ian Templeton	Jeremy Asher	Jonathan Rettmann

THANK YOU FOR RISING UP FOR WILD REVIVAL

Jordan Farina	Lisa Hansen	Michael Blakely	Patrick Lookabaugh	Rob Bowler	Sean Christman	Tim Goforth
Joseph Distaso	Lon Volberding	Michael Bland	Patrick Starr	Rob Elam	Sean Coleman	Tim McGahuey
Joseph Ferguson	Loren Irving	Michael Blumm	Patrick Stoneking	Rob Hollander III	Sha Juniper Orton	Tim Swan
Joseph Freedman	Loretta Strickland	Michael Brown	Patty Lenz	Rob Kirschner	Shane Martin	Tim Uschold
Joseph Galligan	Lucas Black	Michael Dalton	Paul & Carol Fortino	Rob Perkin	Shane Stewart	Timothy Devine
Joseph Gross	Luke Boyd	Michael Dunn	Paul & Joan Sher	Rob Stephens	Shannon Johnson	Todd Barber
Joseph Sherwood	Luke Brennan	Michael Ellsworth	Paul & Marcia Haack	Robert & Jody	Shaun Morrison	Todd Gooding
Josh Linn	Luke Roesel	Michael Esler	Paul Bettelheim	Lashinski	Shea Lavalier	Todd Hirano
Josh Radlein	Lynda Oosterhuis	Michael Finley	Paul Bucci	Robert Adams	Sherri Towne	Todd Kilburn
Joshua Czech	Lynn Dingler	Michael Foley	Paul Fieberg	Robert Chandler	Shya Kane	Todd Schock
Joshua Nardie	Madeleine Buchanan	Michael Gervais	Paul Franklin &	Robert Cook	Skip Greenwood	Tom & Andrea
Judith Somes	Malcolm Lee	Michael Hamberg	Sandra Japley	Robert Gentry	Skip Morris	Tongue
Justin Boucher	Malin King	Michael Hatch	Paul Kaplan	Robert Hurley	Spencer Miles	Tom & Connie Derry
Justin Cetas	Mallory Engelstad	Michael Hayakawa	Paul Kinley	Robert Lane	Stan Chesshir	Tom & Dyann Alkire
Justin Cordonnier	Marc & Julie	Michael Kew	Paul Kirsch	Robert Pauli	Stanley Petrowski	Tom & Karen Sims
Justin Segall	Kummel	Michael Lyman	Paul Kremser	Robert Prior	Stephen Asher	Tom Bie
Karen Hall	Marcus Mattioli	Michael McCord	Paul Kretschmer	Robert Radasch	Stephen Dixon	Tom Bricca
Karl Johnson	Marjorie Wolfe	Michael McLean	Paul Nolte	Robert Sims & Laura	Stephen Erickson	Tom Budzinski
Karl Konecny	Mark & Emily	Michael Miller	Paul Ridgway	Hudson	Stephen Howard	Tom DiChiara
Karl Wenner	Sherwood	Michael Moody	Paul Wagner	Robert Stuart	Stephen Keating	Tom Kelly
Katie Boon	Mark & Marie Louise	Michael Paiya	Pawley Ryan	Robert Vincent	Stephen Kyle	Tom Stocking
Katie Falkenberg	Metzdorff	Michael Parker	Penny Woodcock	Robert Watzke	Stephen Meyers	Tom Toretta
Katie Farrell	Mark Bustillos	Michael Silfen	Pete Adams	Robert Zabrowski	Stephen O'Neill	Tom Warren
Katie Herrell	Mark Caffee	Michael Taylor	Pete Seashols	Robin Cadmus	Stephen Soppet	Torsten Pieper
Keith Bentz	Mark Cooper	Michael Tripp	Peter & Cathy	Rocco Jaconis	Stephen Starke	Travis & Melinda
Keith Klopfer	Mark Fitzloff	Michelle Edwards	Tronquet	Roger & Susan Cox	Steve Ebert	Woodward
Keith Wadley	Mark Friedman	Mike & Gail Davis	Peter & Mim Gray	Roger Bialous	Steve Egge	Travis Brown
Keith Webster	Mark Gibbs	Mike Brunson	Peter & Mary Pat	Roger Casper	Steve Grover	Travis Duddles
Kelly Donahower	Mark Hayes	Mike Buisman	Judkins	Rolf & Linda	Steve Haskell	Trent Jones
Kelsi Jensen	Mark Jacobson	Mike Costello	Peter Brewer	Voergaard	Steve James	Trevor Johnson
Ken Cowart	Mark Kuipers	Mike Crouse	Peter Byrne	Ron & Amanda	Steve Kopp	Trevor Meyer
Ken Kinsman	Mark Masciarotte	Mike Darck	Peter Carlson	Wierenga	Steve Kucas	Troy Haselip
Kenneth & Silvia	Mark Peterson	Mike Farrar	Peter Donahower &	Ron Karsten	Steve Lum	Troy Rintz
Morando	Mark Rupp	Mike Fialcowitz	Tracy Buckner	Ron Miller	Steve Rewick	Tyler Sturrock
Kenneth Dayton	Mark Schifrin	Mike Gilroy	Peter Grubb	Ron Reule	Steve Salter	Tyler WolfKlain
Kenneth Gustafson	Mark Seligman	Mike Goldstein	Peter Murray	Ron Rhodes	Steve Stringham	Una Schmidt
Kenneth Mullen	Mark Stromme	Mike Little	Peter Stephens	Ron Selis	Steve Szeliga	Vanessa Cowie
Kenton Bansemer	Mark Treem	Mike Moore	Peter Williamson	Rona May Bryan	Steve Turner	Victor & Karen
Kerri Wheeler	Mark Ward	Mike Palmer	Peter Wood	Ronald Dyslin	Steve Vedra	Grandidier
Kevin & Misty Bulley	Marshal Moser	Mike Radakovich	Phil Trask	Ronald Garst	Steve Zink	Victor & Sandra
Kevin & Molly Bartel	Marshall Kilduff	Mollie Fialcowitz	Philip Carl	Ronald Schwarz	Steven Andersen	Colvard
Kevin Callaway	Marshall Thompson	Molly Holton	Phillip Conti	Rory Bowman	Steven Goldberg	Virginia Somes
Kevin Guadagno	Martin Benchoff	Molly Kohnstamm	Phillip Sawyer	Ross & Teri Beatty	Steven Morikawa	Wallace Jones
Kevin Mather	Martin Severn	Molly Whitney	Phillip Amaya	Ross Copperman	Stuart Warren	Walter Tingle
Kevin Ostrom	Marty Urman	Morie NessAiver	Phillip Hamilton	Rudy Kellner	Susan Cooney	Wendy Waszmer
Kim Burchiel	Mary & George Gilley	Nancy Duhnkrack	Quentin Payan	Russ Nelson	Susanna Harrison	Will Godfrey
Kim McDonald	Mary & Kenzin Wahl	Nannette McAlister	Rad Dyer	Russell Kennedy	Tanner Irwin	Willard Walch
Kim Nakamura	Mason McKellips	Natalie Wilson	Randal Nixon	Russell Loeb	Tanner Van Orden	William & Nancy
Kimberly Zielke	Mathew Bauer	Natasha Cowie	Randall Shannon	Rusty & Joni	Tatum Hardy	Weare
Kirk Blaine	Mathieu Laffitte	Nate Bronson	Randolph Winston	Sherwood	Ted Brownrigg	William Atlas
Kirk Hopkin	Matias Brecher	Nate DeVol	Randy & Leslie	Ryan Alderaen	Ted McDermott	William Chetwood
Kirk Norton	Matt Amick	Nathan Hall	Labbe	Ryan Allred	Ted Wang	William Ciz
Kirsten Kinsman	Matt Hunnicutt	Nathaniel Price	Randy Miller	Ryan Bittle	Terence Grant	William Evenson
Kris Frank	Matt Mendes	Neeayati Johnson	Randy Smith	Ryan Gallagher	Teresa Frye	William Farr
Kristin Kovalik	Matt Moskal	Neil Bezdek	Rebecca Blair	Ryan Haysey	Terry Pintarelli	William Guditus
Kristofer Shelton	Matt Neznanski	Nellyda Anslow	Rebecca Fritz	Ryan Hook	Terry Thomas	William Kauth
Kyan Bartel	Matt Turner	Nelson Grimes	Rebecca Rudd	Sam Dasher	Thaddeus Grudzien	William Kenna
Kyle Ashby	Matthew Cox	Niall Boggs	Riad Nasr	Sam Kingery	Thatcher Beaty	William Lum
Kyle Babcock	Matthew Drapcho	Niall McCarthy	Rich Domingue	Sam Langston	Theodore Labbe	William Reed
Kyle Morin	Matthew Ebanez	Nicholas Blixt	Rich Nawa	Sam Shiver	Thomas &	William Shaughnessy
Landon Mace	Matthew Filteau	Nick English	Rich Zellman	Samuel Cope	Medi Gantz	William Turner
Lanning Blanks	Matthew Heppner	Nick Kocelj	Richard Adams	Sandy Hazanow	Thomas Abrego	William Wolcott
Lauren Kelley	Matthew Hikes	Nick Rowell	Richard Ahyou	Sarah Burns	Thomas Campbell	Willis Bullard
Laurie Gibbons	Matthew Kramer	Nick Tranquill	Richard Albrecht	Sarah Cloud	Thomas Canadas	Yvon & Malinda
Lawrence Goldsmith	Matthew Sweet	Nicole Watson	Richard Chasm	Sarsfield Dougherty	Thomas Eastwood	Chouinard
Lawrence Neznanski	Matthew Weis	Nolan Held	Richard Cline	Scott Birrer	Thomas Ervasti	Yvonne Besvold
Lee Ann Ross	Max Salzburg	Norman Hersom	Richard Coss	Scott Coulon	Thomas Lloyd	Zach Carothers
Lee Chebert	Max Vogt	Nossa Rudh	Richard Dulude	Scott Crowther	Thomas Mitchell	Zach Colliers
Lee Hughes	Mazie Suliman	Omar Torres	Richard Fitterer	Scott Halpert	Thomas Morgan	Zachary Cassill
Lee Lashway	McLane (Mike)	Oscar Mace	Richard Mayeda	Scott Meikrantz	Thomas Ritter	Zachary Hayes
Lee Spencer	Fisher	Pamela Gomes	Richard Mounts	Scott Mitchell	Thomas Vidmar	Zack Williams
Lee Wagner	Medwin Peck	Parker Tuley	Richard Slusser	Scott Richmond	Thuy Tran	Zento Slinger
Lesley Hand	Megan Oliver	Pat & Becky McRae	Rick Hafele	Scott Rogers	Tim Boyle	Zoe Reagan
Lily Cutler	Melissa Brown	Pat Becker	Rick Koe	Scott Sisamis	Tim Cottage	
Lincoln Ware	Melissa Stocking	Pat Clancy	Rick Pay	Scott Slusarenko		
Linda Sewell	Michael Allen Ross	Patrick Banks	Rick Rupp	Sean Brady		
Lindsay Porter	Michael Baytoff	Patrick Finnegan	Rob Archibald	Sean Burke		

Email Tracy Buckner with any spelling or omission errors: tracy@nativefishsociety.org



NATIVE FISH SOCIETY
PO Box 1536
Oregon City, OR 97045



Printed on 30% post-consumer recycled paper with environmentally conscious toner.

THANK YOU STAFF, BOARD, RIVER STEWARDS & FELLOWS

RIVER STEWARDS

Adam Bronstein
Metolius

Alan L'Hommedieu
Sandy

Alex Bradberry
Elwha

Andrew Chione
Yamhill

Andy Marx
Shasta

Barrett Ames
Clackamas

Ben Leyva
White Salmon

Bob Hoehne
South Umpqua

Bob & Cezanne Alexander
Sol Duc

Bradley Bobbitt
South Puget Sound

Brian & Rachel Anderson
WA Deschutes, Puget Sound

Brice Crayne
SF Toulte

Bryan Sohl
North Umpqua, Rogue

Charles Gehr
Rogue

Chelsey Betterley
White Salmon

Chris Daughters
McKenzie

Chris Johnson
Nooksack

Christie Adelsberger-Nichols
Sprague, Lost

Christine Linkem
White Salmon

Crystal McMahon
Sycan

Dane Downing
MF & NF Eel, Black Butte

Daniel Peirce
Hood

Dave Lacey
Hunter Creek

Dave McCoy
Snoqualmie

David Thomas
McKenzie

David Petersen
Lower Deschutes

Dillon Renton
North Umpqua

Duncan Berry
Salmon

Emily Babcock
White Salmon

Eric Reygers
EF Lewis

Hamish Svenson
White Salmon

Ian Fergusson
Salmonberry

James Smith
Hunter Creek

Jeff Hickman
Nehalem

Jeffrey Kohnstamm
John Day

Jesse Barr
NF Lewis

Jim & Rachel Andras
Bear Creek Tributaries

Jim & Lauren Kerr
Quillayute

Jodi Wilmoth
Little Deschutes

Josh Pruden
Pistol

Joyce Sherman
Salmonberry

Keegen Mueller
Link

Keith Stonebraker
Clearwater

Kellen Igou
Winchuck

Ken Johnson
Terrell Creek

Mark Metzдорff
Lower Deschutes

Marshal Moser
Williamson

Matt Lund
Siletz

Matt Erickson
Salmonberry

Matthew Mendes
Warm Springs

Maya Nabipoor
White Salmon

Michael Mathis
Snake River

Michael Lillie & Becci Curtis-Lillie
Dosewallips

Nick Rowell
Clackamas

Patrick Rasmussen
Chehalis

Patrick Finnegan
SF Clearwater

Paul Fortino
White Salmon

Peter Tronquet
Yaquina, Siletz, Rogue

Rich Zellman
North Umpqua

Russ Ricketts
Wenatchee

Ruth Rasmussen
Satsop

Ryan Goldsmith
Molalla

Ryan Allred
Klamath

Sal Steinberg
Van Duzen

Stanley Petrowski
South Umpqua

Steve Lent
Washougal

Sunny Bourdon
Smith, Chetco

Terre Rogers
Molalla

Tom Derry
Molalla

Tyler Allen
Zigzag

FELLOWS

Andrew Langford

Chris Frissell

Claire Topalian

Dana Weigel Sheedy

David Herasimtschuk

Ed Hepp

Erik Burlingame

Ernie Nieme

Jane Calderbank

Jason Fitzgibbon

Jeffry Gottfried

John Zemrose

Leah Hemberry

Mia Rosser

Nick Wagner

Octave Zangs

Philippe Gauthier

Rowan Baker

Samantha Kannry

STAFF

Mark Sherwood
Executive Director

Tom Derry,
Fundraising Director

Jennifer Fairbrother,
Conservation Director

Tracy Buckner
*Operations +
Women for Wild Fish*

J. Michelle Swope,
Washington Coordinator

Kirk Blaine
*Southern Oregon
Coordinator*

Dr. Liz Perkin
*Northern Oregon
Coordinator*

Dana Renton
*Communications &
Membership Outreach*

BOARD OF DIRECTORS

Paul Fortino
Chairman of the Board

Doug DeRoy
Vice-Chair

Russell Loeb
Treasurer

Kirsten Kinsman
Secretary

Kyan Bartel

Michael Dalton

Jeremy Hull

Warner Munro

Jeff Hickman